

Admonter



Wooden Doors

Doors

Room concepts
made of **natural**
wood for floors,
walls & ceilings



Values

We have been dealing with wood in this region for almost 1,000 YEARS. Its eternal beauty and originality have inspired our craft ever since. It is important to us that we source our wood exclusively from SUSTAINABLY managed forests and ensure a working environment based on RESPECT – both for our forests and those we work with. For us, QUALITY and TRUST must come first and we strive for this to be the most natural thing in the world.

... all from a single source.

Floor, ceiling, wall, stairs, furniture, door and acoustic elements. Harmonised, in contrast or a mosaic from many design elements. The Admonter range allows you to draw from the full source of inspiration.

... design with wood.

Admonter offers everything – both inside and outside the mainstream. Short or long, narrow or wide, in neat rows or in creative patterns. Individuality is part of our DNA.

... multilayered texture.

This makes all Admonter products so stable and resistant to warping.

... ora et labora et lege.

Admonter Holzindustrie AG is a subsidiary of the Admont Abbey and lives up to its responsibility as a company that has grown for around 1,000 years.

... naturalness and sustainability.

All Admonter products are PEFC and EPD certified. Admonter is one of the pioneers in the area of climate and environmental protection.

... team.

In Admont, around 300 people work daily to make the most out of the wood as raw material and so create the Admonter products in the quality that they are known for internationally.

... earnest.

Nature is unpretentious, authentic and honest. At Admonter, we want to preserve this honesty and bring it into your home. Without some magic formula, but with a lot of flair for the craft and attention to detail.

... regionality.

An Admonter product is 100% produced in Admont. Only in Admont. Period.



DOORS

Oak Aurum
Private home Tirol

ADMONTER
INTERIOR WOOD
DOORS - THE
CONNECTION FOR
BEST LIVING
SPACES

VERSIONS AND DESIGNS

- Premium-quality design as - flush with the wall
- Opening to the inside or to the outside
- Doors with glass frieze
- **Sliding doors** – same designs like standard doors



Doors

Oak rustic cross
Private home
Vorarlberg

made of **FLOORs**

made of **ELEMENTs**

1 OAK Lapis



2 OAK



3 RECLAIMED WOOD
extreme



4 RECLAIMED WOOD
hacked H3



DOOR AND FRAME STRUCTURE

- Door thickness: 42, 46 and 52mm, depending on the wood type
- Both our doors and frames are made completely of real wood
- Solid real wood edges on the door and frame provide high shock resistance
- Due to the top-quality hardwood structure, Admonter natural wood doors meet all the requirements of top-rated interior doors
- Direction of the grain of the door: horizontal or vertical, for the door frame: only lengthwise possible

OPENINGS



1 Door 1

- Opening to the inside
(opening into the embrasure)

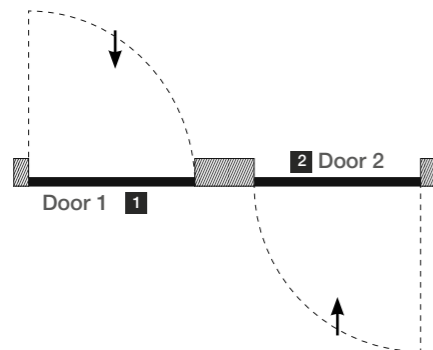


2 Door 2

- Opening to the outside

Position of the viewer
on the opening side
and view to define door
hinge left or right

This door is hinged
on the right



Door 1 1

2 Door 2

Position of the viewer
on the opening side
and view to define door
hinge left or right

This door is hinged
on the right



DOORS WITH FRIEZE GLASS

- Glass section with flush glazing bead
- **Glass types:** Clear glass or Satinato
both in tempered safety glass - ESG (single-pane safety glass)

Door 1 1

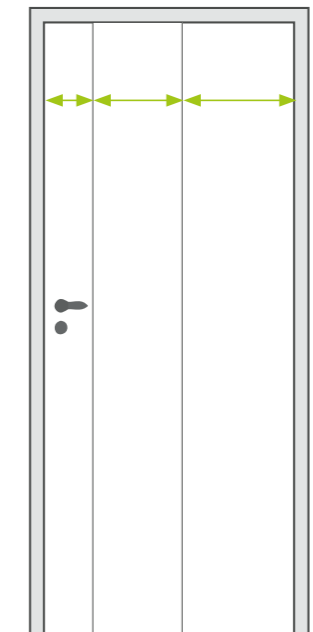


160 mm / 300 mm / residue

160 mm / 300 mm / residue



160 mm
always
lock side



Door 1 - Glass section

Glass section height: 1500 mm
Glass section width: 300 mm

Door 2 - Frieze glass door

Glass width: 300 mm

MAGNETIC LOCKS

- High comfort: effortless closing due to magnetic latch
- No wear of the strike plate
- If closed, strike plate is not visible anymore
- If opened, strike plate is not protruding
- Box locks available for a rustic touch

HINGES

- Option: visible iron hinges - a striking design element



CUSTOMISED DOORS

We manufacture doors upon your individual specifications:

- Structural opening height ELEMENTs: max. 2400mm
- Structural opening height FLOORs: max. 2300mm
- Structural opening width: max. 1250mm for single leaf doors

MOUNTING SYSTEM

- Healthy living and sustainability starts with the product and ends with the mounting system
- Natural wood doors with corresponding mounting technology (formaldehyde-free wall joint)
- Mechanical fastening to brickwork
- Sound-insulating installation joint

HANDLES

- Door handles in ergonomic design
- Flat handle and key escutcheons
- Iron box lock handle as a striking design element

DALLAS

- Flat square escutcheon
- Satin stainless steel surface
- Locking options – non-locking, BB-lock, bathroom/toilet lock, PZ-lock



STOCKHOLM

- Flat round escutcheon
- Satin stainless steel surface
- Locking options – non-locking, BB-lock, bathroom/toilet lock, PZ-lock



ACAPULCO

- Flat rectangular escutcheon
- Satin stainless steel surface
- Locking options – non-locking, BB-lock, bathroom/toilet lock, PZ-lock



BOX LOCK HANDLE

- From iron
- Rustic
- Locking options – lockable with key



EXPLANATION

BB lock: Deadlock

PZ lock: Profile cylinder lock

Bathroom/toilet lock: With thumbturn lock



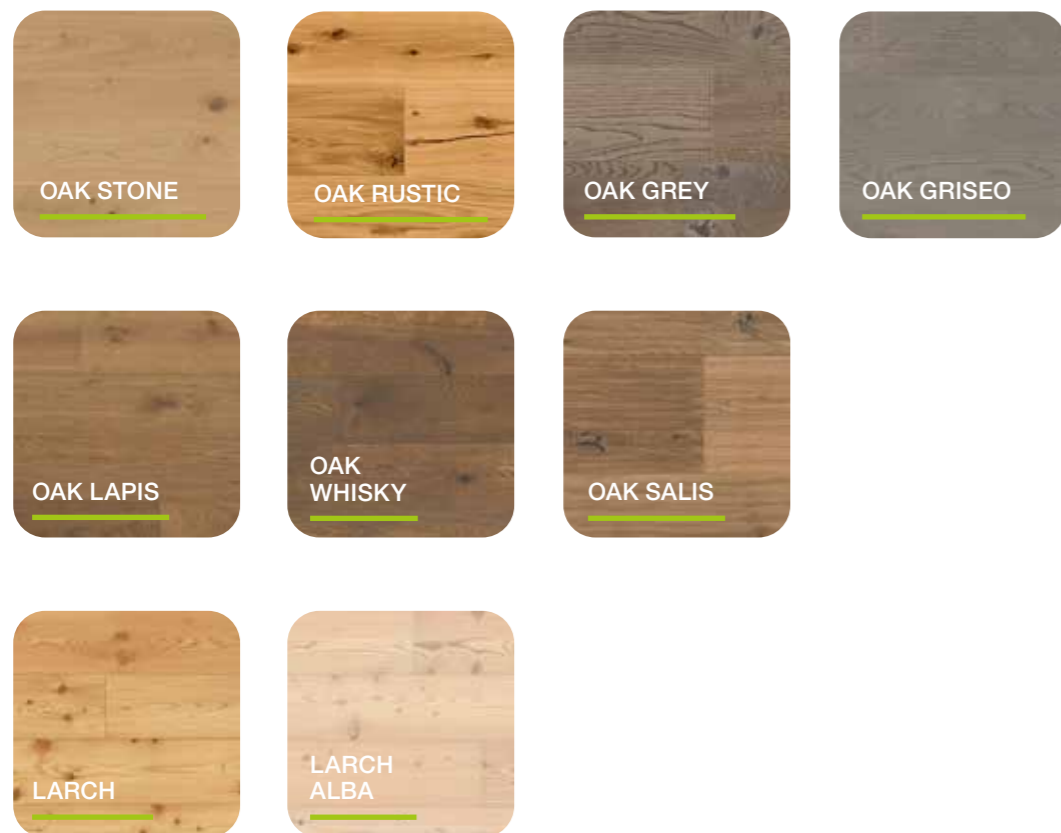
DOORS
Oak Lapis alpin
Privat house
Austria

ADMONTER OPENS
SPACE CONCEPTS
IN UNEXPECTED
HARMONY.

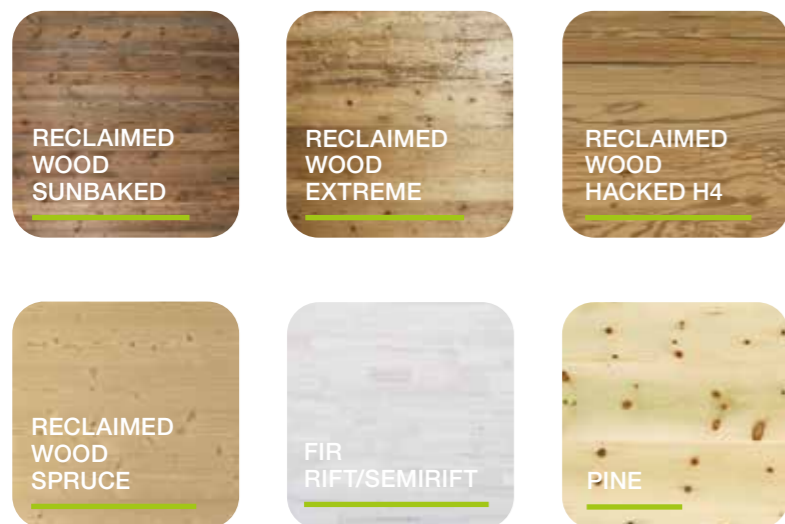
THE DESIGNS FROM
OUR FLOORS AND
ELEMENTS CATEGORIES
FIND THEIR MOVING
COUNTERPARTS
IN THE
HIGH-QUALITY
NATURAL
WOOD DOORS.

CUSTOM-MADE IN
THE DESIRED STYLE,
AND EQUIPPED
WITH LOVING
WORKMANSHIP
AND QUALITY,
ASSOCIATED WITH THE
NAME ADMONTER.

RANGE OF WOOD AND COLOURS

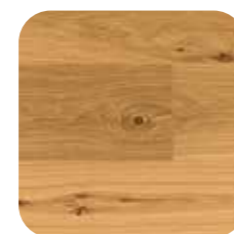


on request: brushed, cross, used



on request: brushed, raw, alpin

GRADINGS



basic

Depending on the type of wood, a knotty or lively wood pattern, without sapwood, rift and plain cut, medium growth and wood-specific colour and structural differences, product-specific flaws and cracks incorporated as features.



rustic

Very lively, rustic wood pattern, without sapwood, rift and plain cut, depending on wood species core partially present, strong growth and wood-specific colour and structural differences, product-specific flaws and cracks incorporated as features, cracks and partially not completely closed details are part of the rustic appearance..

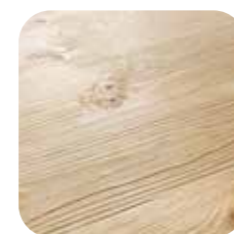
SURFACE FINISH



natural oiled

100% natural oils keep the pores of the wood open. Here the health-promoting aspect of the indoor climate comes into its own. When cared for regularly and properly, the surface develops a natural patina of extraordinary resilience.

TEXTURES



brushed

Softer wood parts are brushed away. This gives your door a 3-dimensional surface. The sensuality of wood becomes visible and tangible in a unique way.



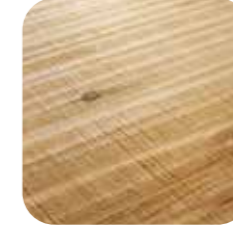
cross

Strong lengthwise and crosswise brushing contribute to an attractive appearance to your door.



used

Used is strong partial brushing across the grain, which gives the floorboard a look and feel with a stunning character. Every floorboard is brushed once on the edge, in the middle or over the entire surface.



alpin

Scraping combined with strong brushing across the grain gives the boards their special raw character.

DOORS

Oak white
Hotel Graseck
Germany



SINCE 1874

Admonter Holzindustrie AG | Sägestraße 539 | 8911 Admont, Austria
Tel.: + 43 (0) 3613 / 3350-0 | info@admonter.at | www.admonter.com

Wooden Floors
Floors

Wooden Panels
Elements

Wooden Acoustic Panels
Acoustics

Wooden Stairs
Stairs

Wooden Doors
Doors

